

# Digital YolkFan™ App Setup Guide and Best Practices

The following steps are recommended for all Digital YolkFan users.

## Step 1

- Unbox your Digital YolkFan™. Inside the box, you will find the charging cable, a microfiber carrying pouch, a quick start guide, and egg yolk adapters.



Note: Your Digital YolkFan™ Pro arrives in a “sleeping” state. You must wake up the device before use. To do so, plug it in using the provided USB cable to either your computer or any cellphone charger. Unplug from charger before using device.

## Step 2

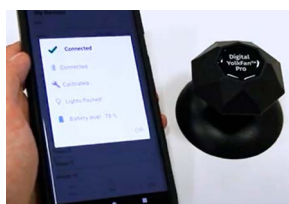
- Attach a new yolk adapter using firm downward pressure.



Pro Tip: Even though it's possible to clean your yolk adapter, it's recommended to replace them after extended use for optimal results.

## Step 3

- Start the Digital YolkFan™ App and connect to your device.



Note: If more than one Digital YolkFan™ is within range of your phone, the app will list them with the nearest (greatest signal) unit at the top.

Warning: You must allow location services and Bluetooth on your mobile device for the app to work correctly.

## Step 4

- Crack an egg on any white plate. Place the Digital YolkFan™ on the yolk.



Pro Tip: Be sure to lower the Digital YolkFan™ on to the yolk at an angle. This reduces air bubbles and prevents the yolk from potentially rupturing. Press down with moderate pressure.

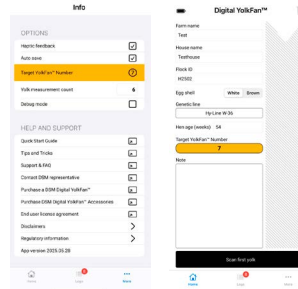
- Warning: Ensure the yolk adapter is clean, properly

seated, and scratch free before scanning.

- Ensure all air bubbles are removed from under the yolk adapter by lowering the device at an angle. Bubbles will result in incorrect readings.

## Step 5

- In “More”, select the target YolkFan™ number and specify the number of yolks to be measured per batch.



- Pro Tip: For the most accurate picture of your flock, a minimum yolk count of 6 per flock has been determined to be optimal.
- Pro Tip: You should specify the farm, house, and flock ID to ensure your data is properly identified before saving to the log. You should also specify the egg shell color, genetic line, and hen age.

## Step 6

- On the Home screen press “Scan first yolk”. Repeat this process for every egg. You will then

receive the YolkFan™ number on screen. Press “Save results” to save the result to the log.



Pro Tip: At the bottom of the screen, you can view the proportion of yolks that are within +/- 1 of the target YolkFan™ number, as well as the proportion that are above and below the target YolkFan™ number. This gives you a detailed look at the distribution of yolk color within the flock – to ensure your customer receives consistent, high-quality eggs.

## Step 7

- In “Logs” you can view all previous measurements, and export all (or a selection) of the measurements as a .CSV file.

